

HS2

Phase 2a Update

Liz Davis Community Engagement Manager

HS2

Phase 2a

Key facts

- 5,000 jobs will be supported during the construction of Phase 2a.
- Phase 2a offers **direct services** and **connections** from the south to regions across Britain.
- The first new intercity railway built in the North of England for over 100 years.

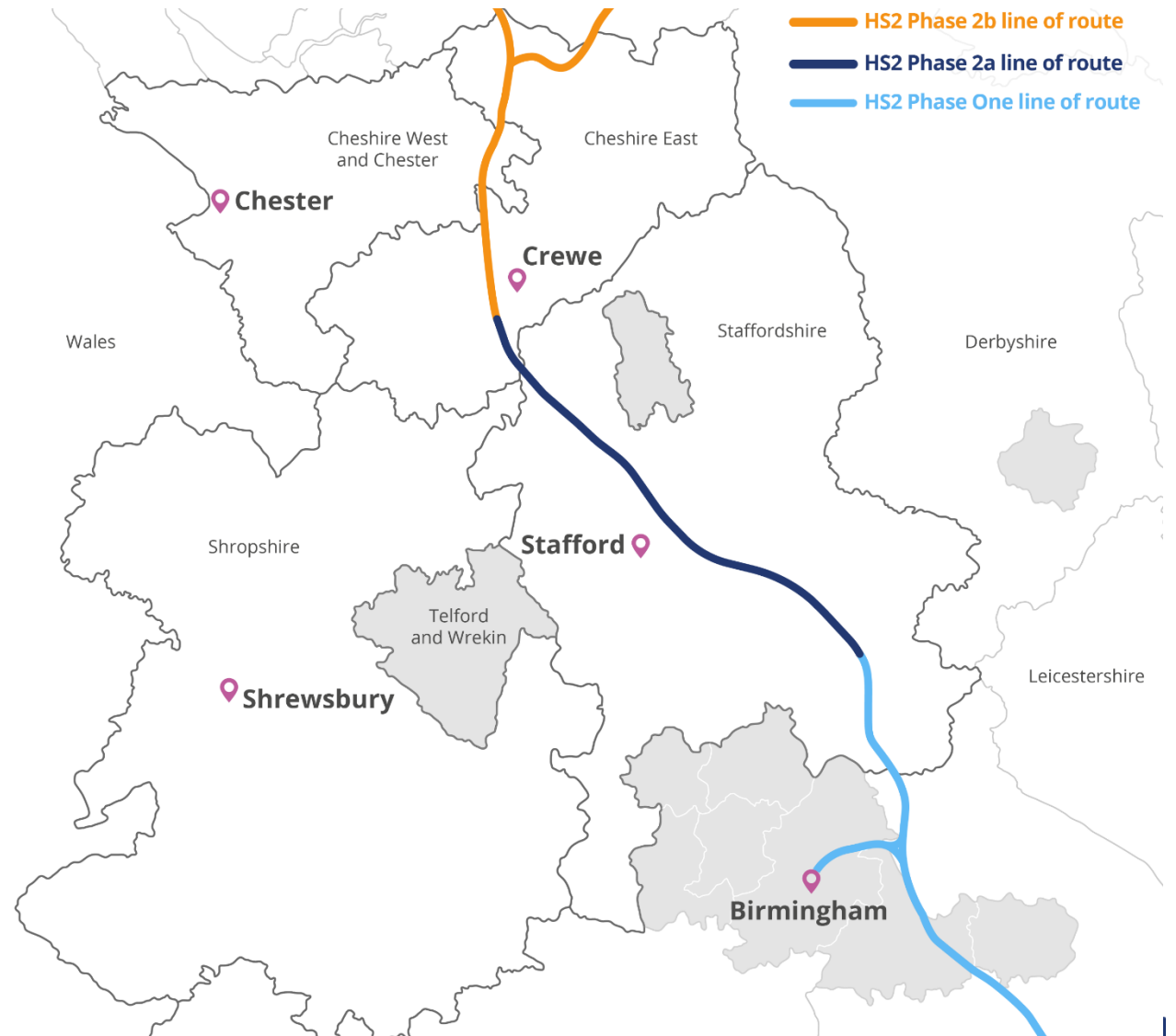


Phase 2a consultation

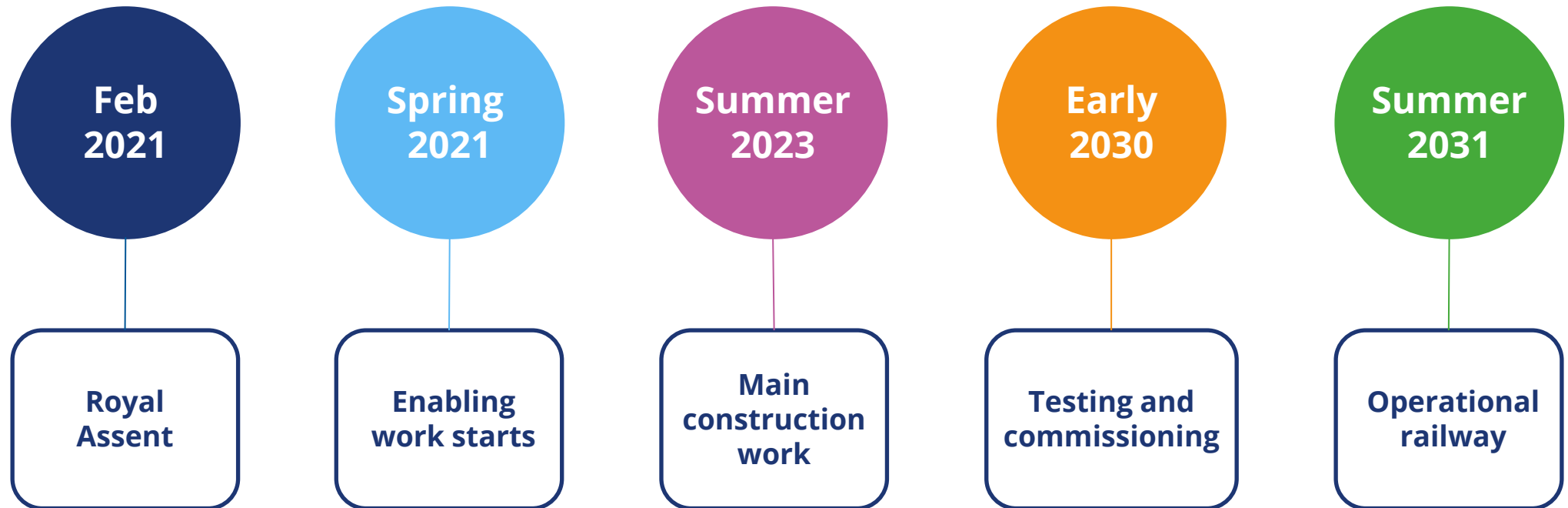
Bullets of topics

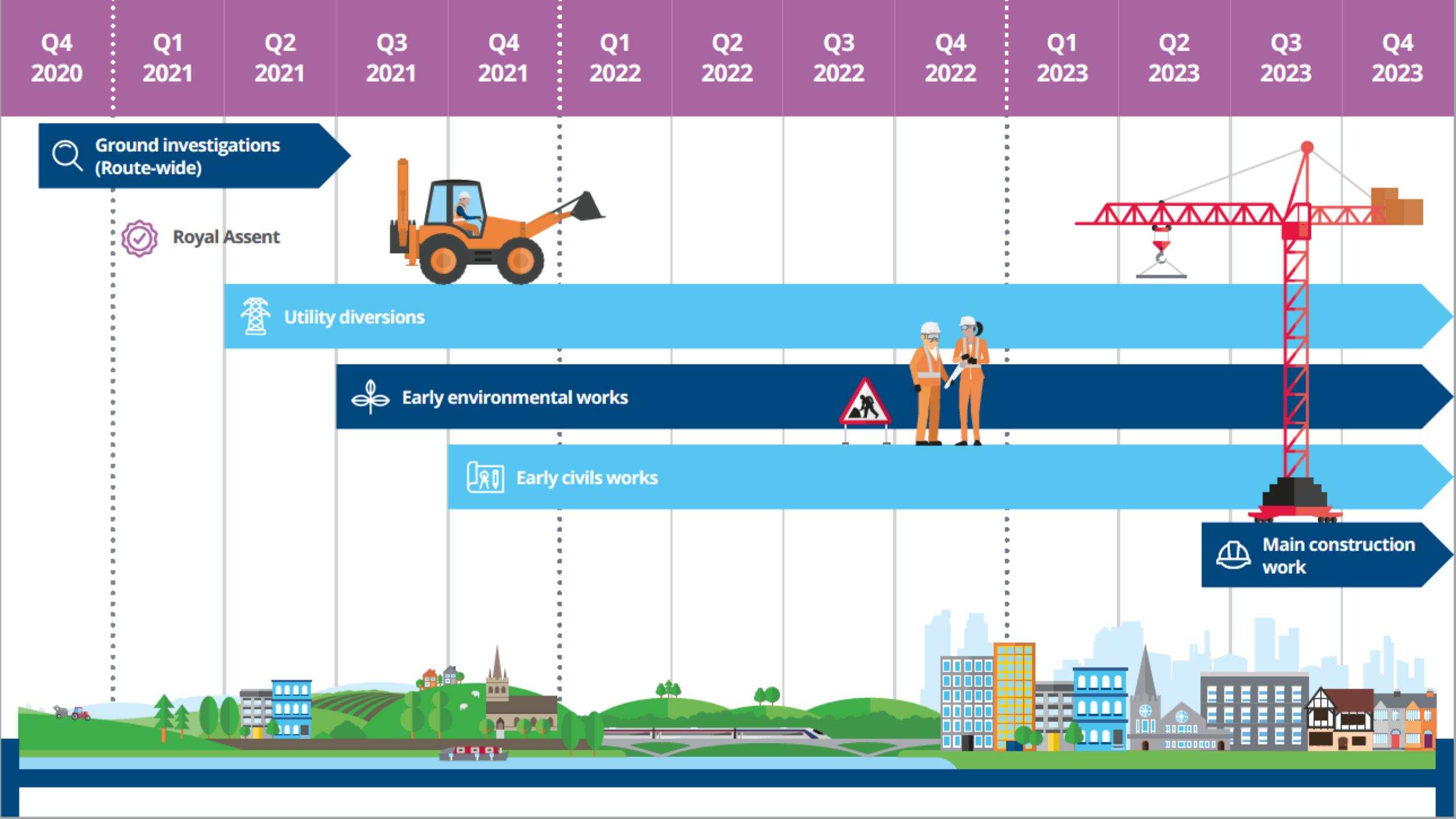
- impact of road traffic
- impact of our work on the natural environment, transport provisions.
- whether new railway stations, improvements to existing railway stations, and the reopening of associated lines is necessary to support passenger connections to Phase 2a.

The consultation closed on 26 February 2021



HS2 Phase 2a programme





Construction statistics



Current and forthcoming works

Ground Investigations (GI) WP4

- Our contractors, Balfour Beatty started the Route wide GI work in November - will take several months to complete
- Over 1,200 locations starting in the southern part of the 2a route - undertaking Boreholes, trial pits and cone penetration testing
- Working closely with landowners and their agents

Early Construction Works (ECW)

- Progress detailed design of the Phase 2a, such as Wood End Lane widening and traffic signal works over 2021.
- Works into construction will be in 2022.
- An initial interface meeting was held with highway authority, Staffordshire County Council in the January.

Early Environment Works (EEW)

- Preparation works will begin in Spring 2021.
- Main works will begin late Autumn/Winter
- Involves over 80 sites along the Phase 2a Line of Route, plus 3 compounds.
- The main construction programme is not due to start until 2023.

Ground investigation work

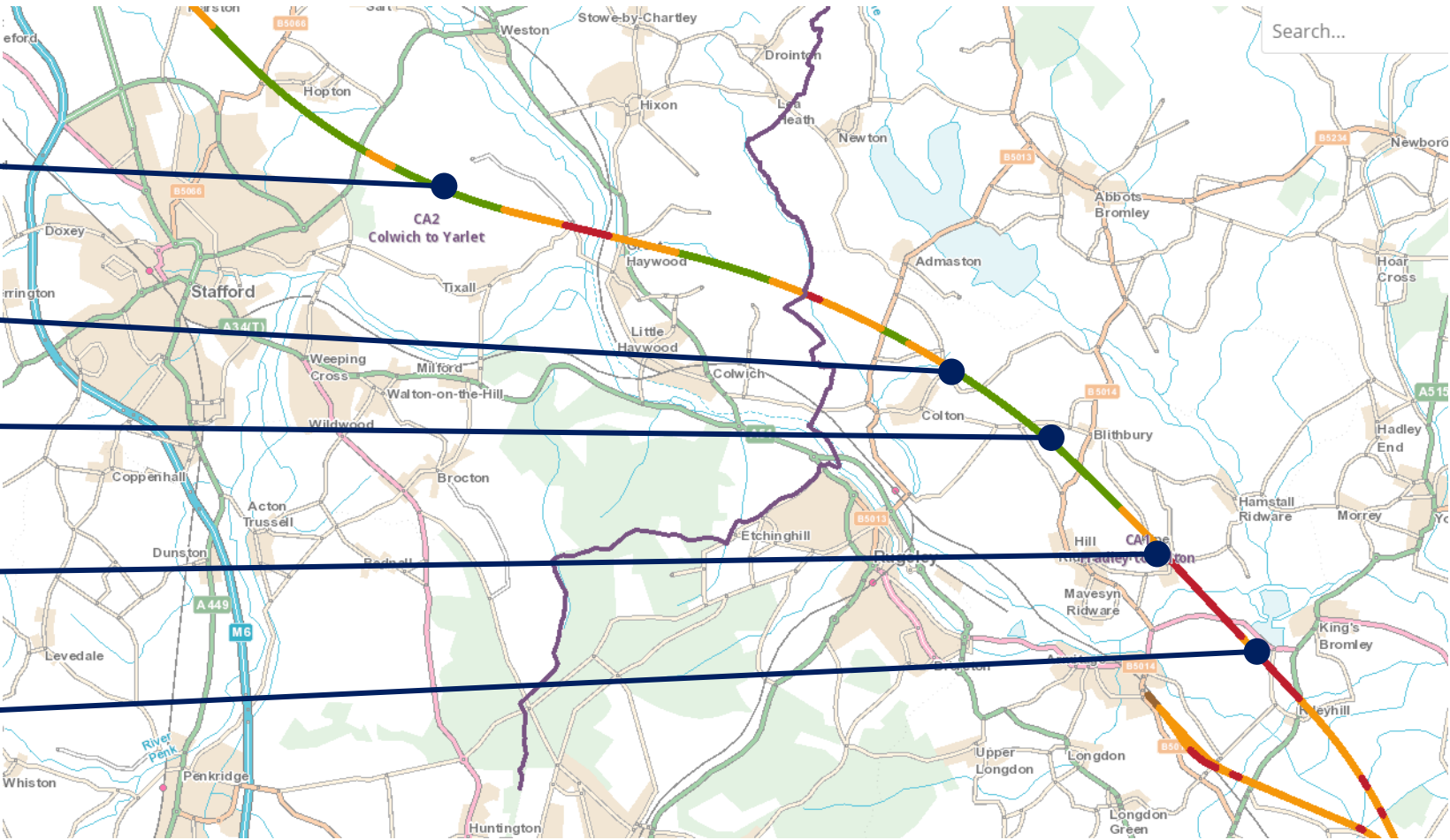
Ingestre Park Golf Club

Colton

Blithbury

Pipe Ridware

Kings Bromley



Engagement - informing communities

**Newsletters /
In Your Area
Booklets**

**Digital
surgeries**

**Community
website**

**Online
presentations**

**Information
points**

**Engagement with
directly impacted
parties**

**Route-wide and
targeted mail outs**

**Parish council
updates**

Being a good neighbour



Community initiatives & projects



Growing Spaces



Forward look



CEF/BLEF

HS2

Community & Business Funds (CEF & BLEF)



Funding options:

CEF Local

Fund smaller projects (maximum of **£75,000**) which will benefit quality of life for individual communities.

CEF Strategic

Fund larger projects (between **£75,001- £250,000**) supporting projects which benefit multiple communities along the Phase 2a route.

BLEF

Fund projects from **£10,000** up to a maximum of **£250,000**

- **£10,000 - £75,000** typically for smaller scale, kick starters.
- **£75,001 - £250,000** typically for longer term or larger scale enterprise.

Project examples;

Although these projects are close to the Phase 2a line of route, applicants were also able to demonstrate disruption from Phase One construction which is why they were eligible for funding.

Kings Bromley Village Hall Refurbishment

Kings Bromley Parish Council were awarded **£50,000** for their project to refurbish and modernise the existing village hall to improve facilities for members of the Kings Bromley community and surrounding villages. The Village Hall was built over 100 years ago and was in need of refurbishment.



The Wolseley Centre

Staffordshire Wildlife Trust were awarded £75,000 towards upgrade to visitor facilities at their wildlife and countryside visitor centre which included works to; Remodel the existing building to create a 60+ cover café, improve accessibility to complete a circular path around the site with a flat gradient for wheelchairs / buggies, deliver a series of mini-projects around the site to enhance habitat diversity and increase opportunities for visitors to experience native wildlife on site.

Contact details & more information

Independent Grant Management Body- Groundwork UK

Telephone hotline 0121 237 5880

HS2funds@groundwork.org.uk

All the key documents

<https://www.groundwork.org.uk/hs2funds>



Working in
partnership with

HS2